

BALDOR® • RELIANCE 

Product Information Packet

EHM9246T

30HP, 1775RPM, 3PH, 60HZ, 286T, 4048M, OPSB, F1

Part Detail							
Revision:	K	Status:	INA/A	Change #:		Proprietary:	No
Type:	AC	Elec. Spec:	40WGW411	CD Diagram:	CD0180	Mfg Plant:	
Mech. Spec:	40J098	Layout:	40LYJ098	Poles:	04	Created Date:	
Base:	RG	Eff. Date:	08-24-2010	Leads:	9#10		

Specs			
Catalog Number:	EHM9246T	Inverter Code:	Not Inverter
Enclosure:	ODP	KVA Code:	G
Frame:	286T	Lifting Lugs:	Standard Lifting Lugs
Frame Material:	Steel	Locked Bearing Indicator:	No Locked Bearing
Output @ Frequency:	30.000 HP @ 60 HZ	Motor Lead Quantity/Wire Size:	9 @ 10 AWG
Synchronous Speed @ Frequency:	1800 RPM @ 60 HZ	Motor Lead Exit:	Ko Box
Voltage @ Frequency:	230.0 V @ 60 HZ	Motor Lead Termination:	Flying Leads
	460.0 V @ 60 HZ	Motor Type:	4048M
Auxillary Box:	No Auxillary Box	Mounting Arrangement:	F1
Auxillary Box Lead Termination:	None	Power Factor:	82
Base Indicator:	Rigid	Product Family:	General Purpose
Bearing Grease Type:	Polyrex EM (-20F +300F)	Pulley End Bearing Type:	Ball
Blower:	None	Pulley Face Code:	Standard
Current @ Voltage:	37.000 A @ 460.0 V	Pulley Shaft Indicator:	Standard
	74.000 A @ 230.0 V	Rodent Screen:	None
	80.000 A @ 208.0 V	Shaft Extension Location:	Pulley End
Design Code:	B	Shaft Ground Indicator:	No Shaft Grounding
Drip Cover:	No Drip Cover	Shaft Rotation:	Reversible

Duty Rating:	CONT	Shaft Slinger Indicator:	No Slinger
Electrically Isolated Bearing:	Not Electrically Isolated	Speed Code:	Single Speed
Feedback Device:	NO FEEDBACK	Motor Standards:	NEMA
Front Face Code:	Standard	Starting Method:	Direct on line
Front Shaft Indicator:	None	Thermal Device - Bearing:	None
Heater Indicator:	No Heater	Thermal Device - Winding:	None
Insulation Class:	F	Vibration Sensor Indicator:	No Vibration Sensor

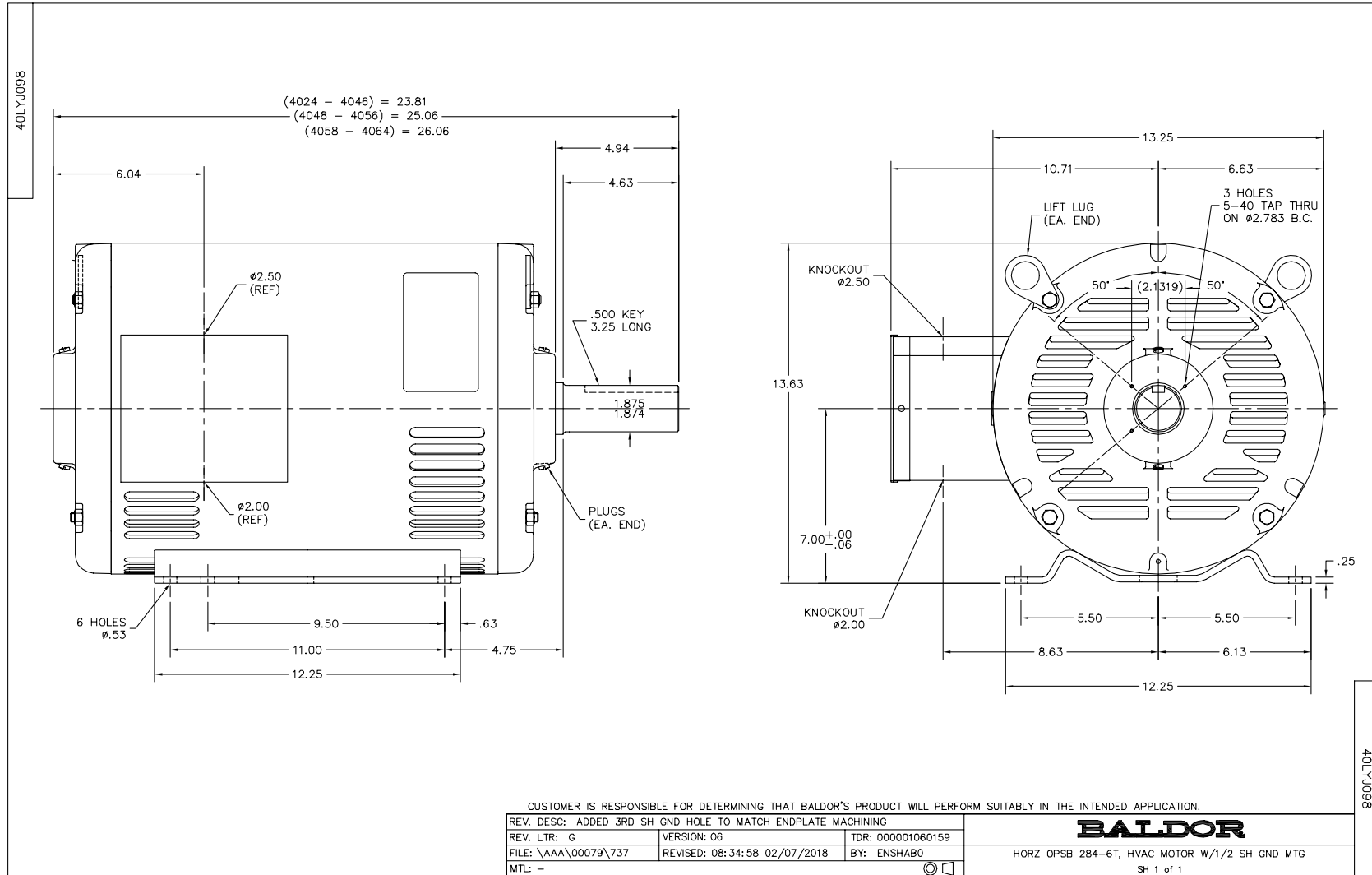
Nameplate NP1891A02	
CAT.NO.	EHM9246T
SPEC.	40J098W411G1
HP	30
VOLTS	230/460
AMPS	74/37
RPM	1775
FRAME	286T
SER.F.	1.15
NEMA-NOM-EFF	93
RATING	40C AMB-CONT
CC	010A
DE	6311
AUTO	
ENCL	OPSB
BLANK	
CODE	G
PF	82
MANUAL	
SN	
HZ	60
DES	B
CL	F
PH	3
ODE	6309
NONE	
USABLE AT 208V	80

Parts List		
Part Number	Description	Quantity
SA071168	SA 40J098W411G1	1.000 EA
RA065027	RA 40J098W411G1	1.000 EA
S/P111-000-001	S/P111-000-001 CORONA TEST	1.000 EA
HA6361A01	LIFTING LUG FOR 37, 39 & 40 FRAME ZINC	2.000 EA
40CB4000A01	CONDUIT BOX 40, STAMPED	1.000 EA
WD1000B16	T&B CX70TN OR L70P TERMINAL LUG	1.000 EA
40EP3200A02	STD FREP OPEN 309 BRG	1.000 EA
HW5100A11	W3917-042 WVY WSHR (WB)	1.000 EA
40EP3200B05	STD PUEP OPEN 311 BRG	1.000 EA
XY3816A12	3/8-16 FINISHED NUT	8.000 EA
39CB4500A01	CONDUIT BOX LID 39, STAMPED, W/ PRIMER	1.000 EA
51XF2520A08	SCREW, HEX SER SLT HD, ZN 1/4-20 X .50 L	2.000 EA
51XF2520A08	SCREW, HEX SER SLT HD, ZN 1/4-20 X .50 L	2.000 EA
HW2501H28	KEY, 1/2 SQ X 3.250	1.000 EA
HW4500A20	1/8NPT SL PIPE PLUG	2.000 EA
MJ1000A02	GREASE, MOBIL POLYREX EM - 124047	0.050 LB
HW4500A20	1/8NPT SL PIPE PLUG	2.000 EA
HA4051A00	PLASTIC CAP FOR GREASE FITTING	1.000 EA
MG1000G59	PAINT, 689.959 WILKO SILVER	0.070 GA
HA3154A04	THRUBOLT STUD 3/8-16 X 18.750	4.000 EA
40AD2002B01	LEXAN BAFFLE 40 FR OPEN	1.000 EA
40AD2002B01	LEXAN BAFFLE 40 FR OPEN	1.000 EA
LB1125C04	STD-E (STOCK CTN LABEL STD-E WITH FLAG)	4.000 EA
MN416A01	TAG-INSTAL-MAINT no wire (1200/bx) 3/19	1.000 EA

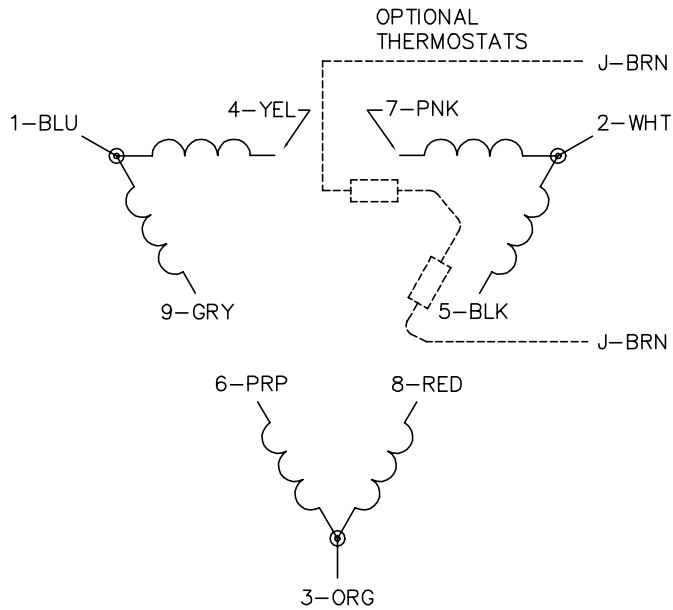
Parts List (continued)		
Part Number	Description	Quantity
HA4051A00	PLASTIC CAP FOR GREASE FITTING	1.000 EA
NP1891A02	PREM EFF HVAC MTR, W/CD0180 CONNS	1.000 EA
40PA1000	PACKAGING GROUP	1.000 EA
LB1417	LABEL CARTON 6X4 PERFORATED BLANK ROLLS	1.000 EA

Accessories		
Part Number	Description	Multiplier
40-1400	C FACE KIT	A8

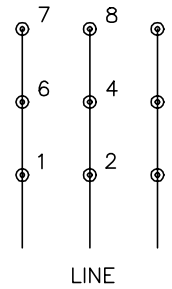
No performance data has been
assigned to this product.



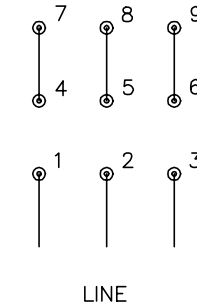
CD0180



LOW VOLTAGE
(2D)



HIGH VOLTAGE
(1D)



NOTES:

1. INTERCHANGE ANY TWO LINE LEADS TO REVERSE ROTATION.
2. OPTIONAL THERMOSTATS ARE PROVIDED WHEN SPECIFIED.
3. ACTUAL NUMBER OF INTERNAL PARALLEL CIRCUITS MAY BE A MULTIPLE OF THOSE SHOWN ABOVE.
4. LEAD COLORS ARE OPTIONAL. LEADS MUST ALWAYS BE NUMBERED AS SHOWN.

CD0180

REV. DESC: ADD CLASS CONN00000007		
REV. LTR: D	VERSION: 01	TDR: 000001099922
FILE: \AAA\00005\148	REVISED: 10:25:29 02/19/2019	BY: ENBRIRO
MTL: -	© □	

BALDOR - RELIANCE®

3PH, DV, 9 LEADS, DELTA CONNECTION

SH 1 of 1